



ASME B18.2.2 Square Nut

Leader-Fastener is a manufacturer and distributor of **ASME B18.2.2 Square Nut**. We have a complete line of service from having invested in production plants, export department and to having a quality control team and center to meet your requirements. We regard quality as the life of the company. We persist in good quality as the first policy and have established a set of quality control and inspection system according to the international standard. We have carried out ISO9001 Quality Guarantee System in every course of production, transportation and selling. We do hope we could be your partner in business by

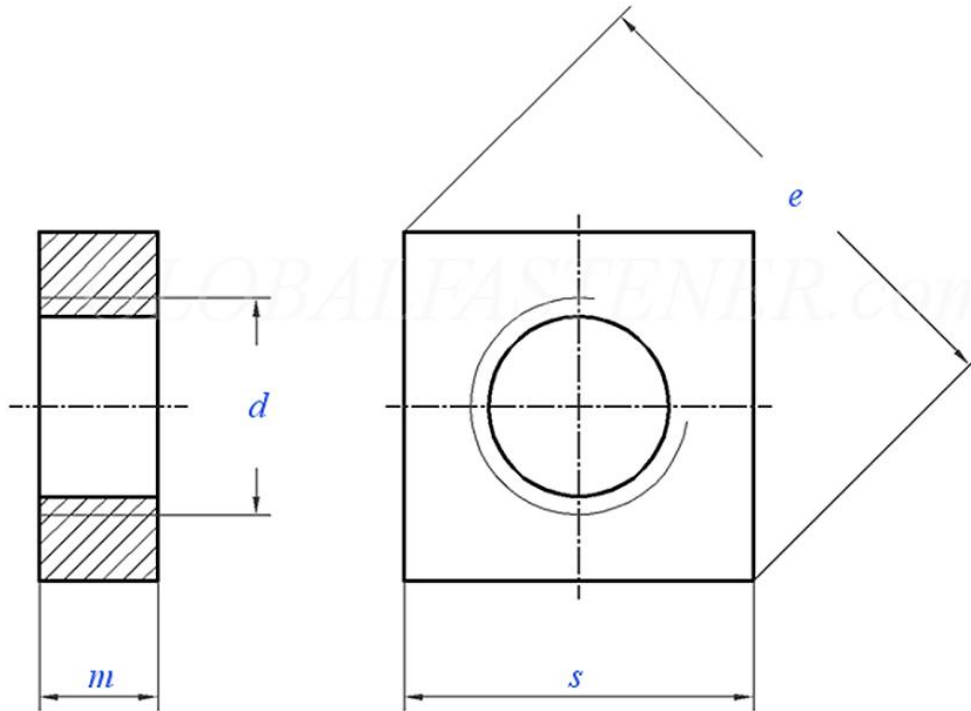
topping quality, knight service and competitive price in the near future and be your friends as well.

ASME B18.2.2 Square Nut, these square nuts have a 4-sided, square design which provides a greater bearing surface when installing. Square nuts are designed for use with square headed bolts, though they can also be used with some machine screws. The large surface provides better resistance to loosening. Also used with flat washers of compatible size and material.

Product Specification of ASME B18.2.2 Square Nut

Material : Carbon steel, Stainless steel, Alloy Steel, Brass.

Finishment: Black, Zinc Plated, Zinc Yellow, HDG, Phosphate, DACROMET, Geomet, Magin, Ruspert, Teflon, etc.

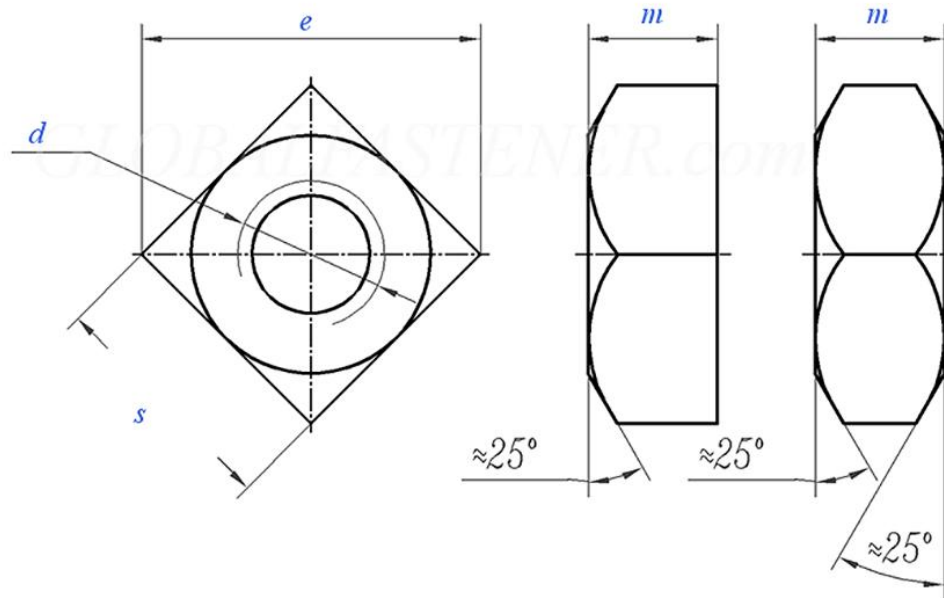
ASME B 18.2.2 - 2022 Heavy Square Nuts [Table 1] (SAE J995 / ASTM F594 / F467)


Screw Thread	0#	1#	2#	3#	4#	5#	6#	8#	10#	12#	1/4	5/16	3/8	
d	0.060 0	0.073 0	0.086 0	0.099 0	0.112 0	0.125 0	0.138 0	0.164 0	0.190 0	0.216 0	0.250 0	0.312 0	0.375 0	
P C	UN	-	64	56	48	40	40	32	32	24	24	20	18	16
	UNF	80	72	64	56	48	44	40	36	32	28	28	24	24
s	min	0.150	0.150	0.180	0.180	0.241	0.302	0.302	0.332	0.362	0.423	0.423	0.545	0.607
	max	0.156	0.156	0.188	0.188	0.250	0.312	0.312	0.344	0.375	0.438	0.438	0.562	0.625
e	min	0.206	0.206	0.247	0.247	0.331	0.415	0.415	0.456	0.497	0.581	0.581	0.748	0.833
	max	0.221	0.221	0.265	0.265	0.354	0.442	0.442	0.486	0.530	0.619	0.619	0.795	0.884
m	min	0.043	0.043	0.057	0.057	0.087	0.102	0.102	0.117	0.117	0.148	0.178	0.208	0.239
	max	0.050	0.050	0.066	0.066	0.098	0.114	0.114	0.130	0.130	0.161	0.193	0.225	0.257

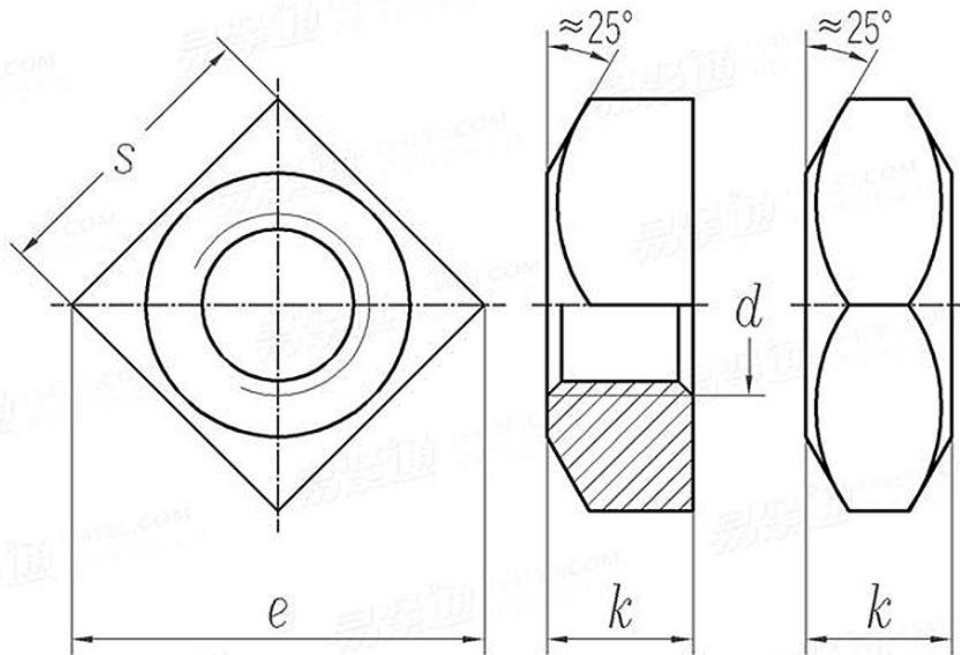
①,Threads shall meet the requirements of ASME B.1

②,If electroplated finishes are required,reference ASTM F1941.Other finishes may be specified as indicated in the applicable mechanical and performance standards.

③,Unless otherwise speificed, machine screw nuts shall be made of carbon steel

ASME B 18.2.2 - 2022 Square Nuts [Table 3] (SAE J995 / ASTM F594 / F467)


Screw Thread	1/4	5/16	3/8	7/16	1/2	5/8	3/4	7/8	1	1-1/8	1-1/4	1-3/8	1-1/2	
d	0.250 0	0.312 5	0.375 0	0.437 5	0.500 0	0.625 0	0.750 0	0.875 0	1.000 0	1.125 0	1.250 0	1.375 0	1.500 0	
P	UNC	20	18	16	14	13	11	10	9	8	7	7	6	6
	UNF	28	24	24	20	20	18	16	14	12	12	12	12	12
	8-U N	-	-	-	-	-	-	-	-	-	8	8	8	8
s	min	0.425	0.547	0.606	0.728	0.788	0.969	1.088	1.269	1.450	1.631	1.812	1.994	2.175
	max	0.438	0.562	0.625	0.750	0.812	1.000	1.125	1.312	1.500	1.688	1.875	2.062	2.250
e	min	0.554	0.721	0.802	0.970	1.052	1.300	1.464	1.712	1.961	2.209	2.458	2.708	2.956
	max	0.619	0.795	0.884	1.061	1.149	1.414	1.591	1.856	2.121	2.386	2.652	2.917	3.182
m	min	0.203	0.249	0.310	0.356	0.418	0.525	0.632	0.740	0.847	0.970	1.062	1.169	1.276
	max	0.235	0.283	0.346	0.394	0.458	0.569	0.680	0.792	0.903	1.030	1.126	1.237	1.348

ASME B 18.2.2 - 2022 Heavy Square Nuts [Table 9] (SAE J995 / ASTM F594 / F467)


Screw Thread		1/4	5/16	3/8	7/16	1/2	5/8	3/4	7/8	1	1-1/8	1-1/4	1-3/8	1-1/2
d		0.2500	0.3125	0.3750	0.4375	0.5000	0.6250	0.7500	0.8750	1.0000	1.1250	1.2500	1.3750	1.5000
PP	UNC	20	18	16	14	13	11	10	9	8	7	7	6	6
	UNF	28	24	24	20	20	18	16	14	12	12	12	12	12
8-UN		-	-	-	-	-	-	-	-	-	8	8	8	8
s	Nominal Size	1/2	9/16	11/16	3/4	7/8	1-1/16	1-1/4	1-7/16	1-5/8	1-13/16	2	2-3/6	2-3/8
	min	0.488	0.546	0.669	0.728	0.850	1.031	1.212	1.394	1.575	1.756	1.938	2.119	2.300
	max	0.500	0.562	0.688	0.750	0.875	1.062	1.250	1.438	1.625	1.812	2.000	2.188	2.375
e	min	0.640	0.720	0.889	0.970	1.137	1.386	1.635	1.884	2.132	2.381	2.631	2.879	3.128
	max	0.707	0.795	0.973	1.060	1.237	1.503	1.768	2.033	2.298	2.563	2.828	3.094	3.359
k	Nominal Size	1/4	5/16	3/8	7/16	1/2	5/8	3/4	7/8	1	1-1/8	1-1/4	1-3/8	1-1/2
	min	0.218	0.280	0.341	0.403	0.464	0.587	0.710	0.833	0.956	1.079	1.187	1.310	1.433
	max	0.266	0.330	0.393	0.456	0.520	0.647	0.774	0.901	1.028	1.155	1.282	1.409	1.536